

HOW TO  
*Style and Accessorize*  
YOUR  
HOME DECOR



KASIA MCDANIEL

# AREAS TO ACCESSORIZE

Entryway

Home Office

Coffee table

Fireplace mantle

Nightstand

Dresser

Kitchen

Bathroom

Living Room

Bedding Arrangement

# LIST OF ACCESSORIES

Candles

Vase with flowers

Hard cover books

Local magazines

Candle sticks

Fake plant in pot

Decorative box

Small clock

Decorative tray

Small ceramic statue

Small globe

Decorative vase

Kitchen towels

Bowl of lemons

# STAGING TIPS

Using the accessories listed in the page before, you can use them in multiple rooms around the house.

After decluttering, these accessories help add color and interest without adding clutter.

# STAGING TIPS

Reuse the homeowners items such as desks, tables, artwork, mirrors and lamps if possible.

\*REALTORS: Create separate totes for each room if you wish as you gather your accessories.

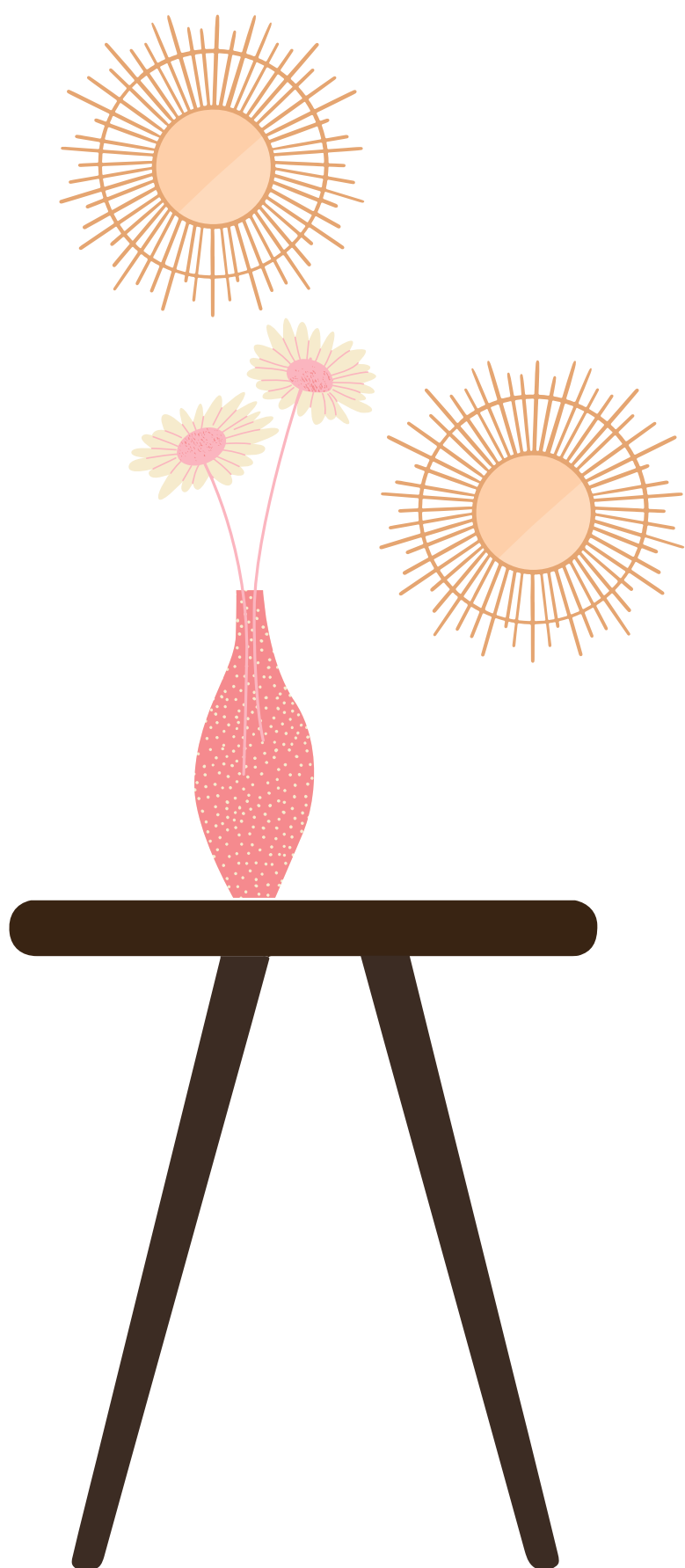
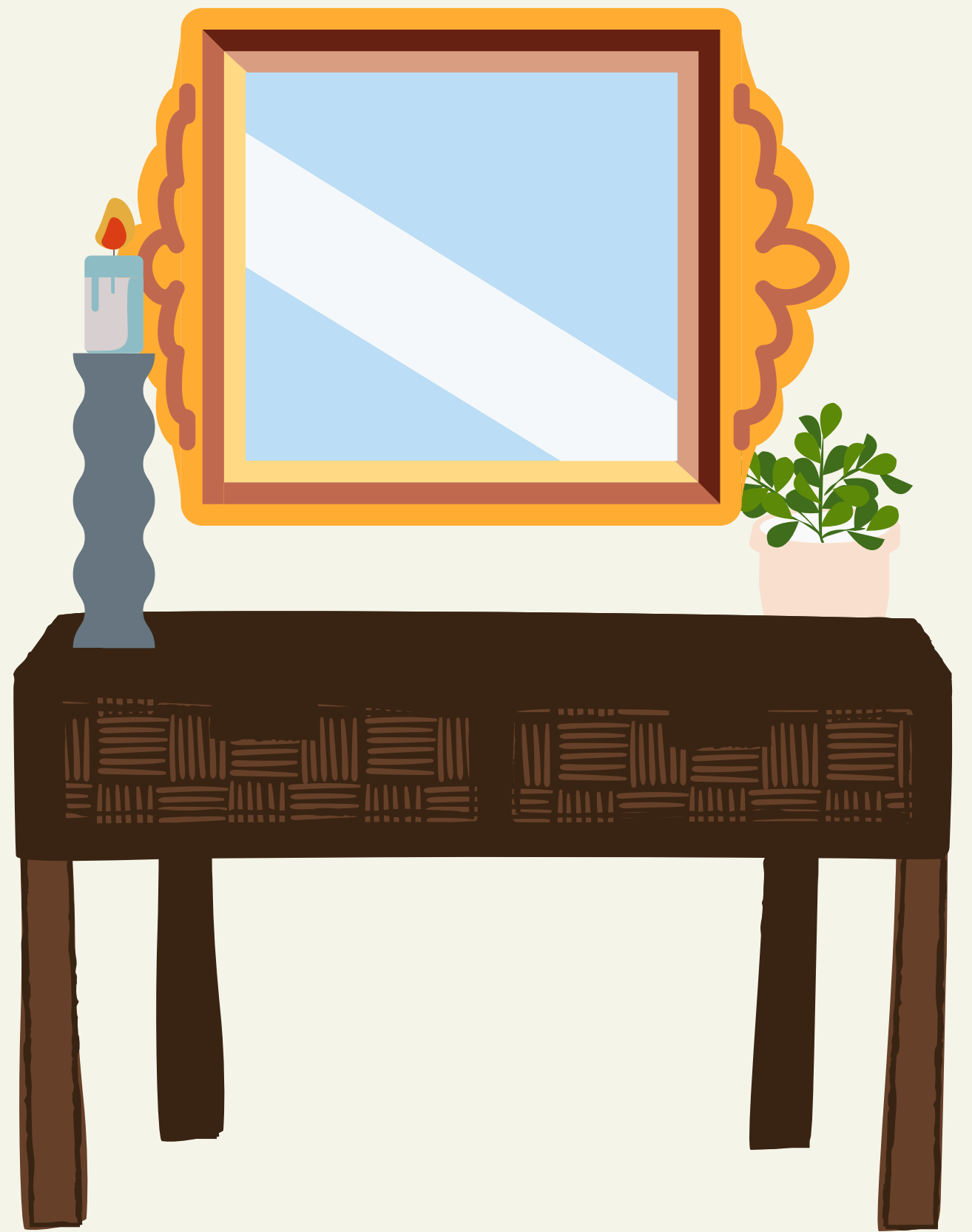
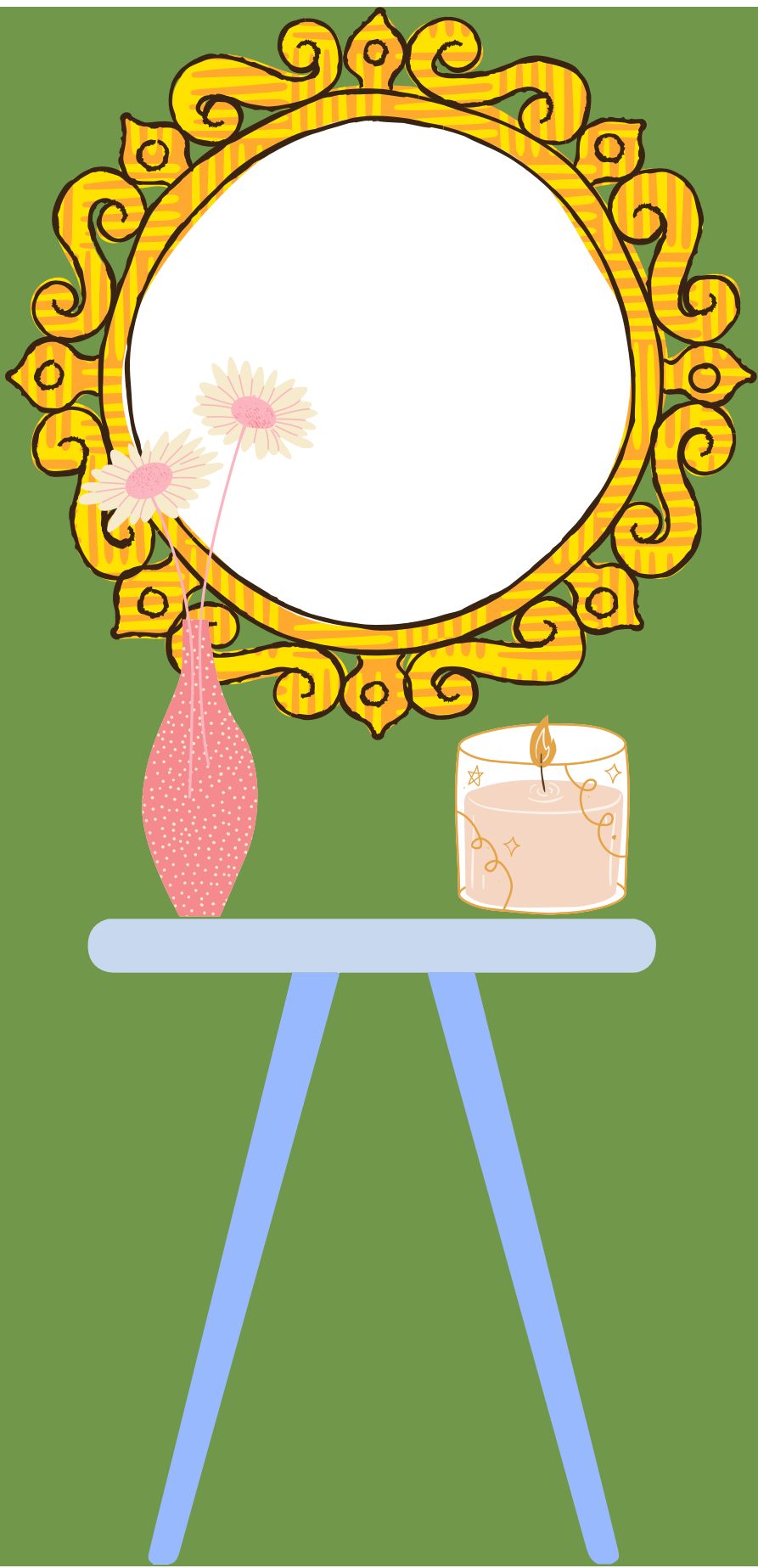
# STAGING TIPS

Try to pick accessories in similar or complimentary colors i.e. all blue or all green; green & yellow.

If you have bookshelves, you can use these items on them as well.

The following pictures are cheat sheets you can use to stage an area.

# ENTRYWAY STAGING



# ENTRYWAY STAGING TIPS

Keep this area as clutter free as possible.

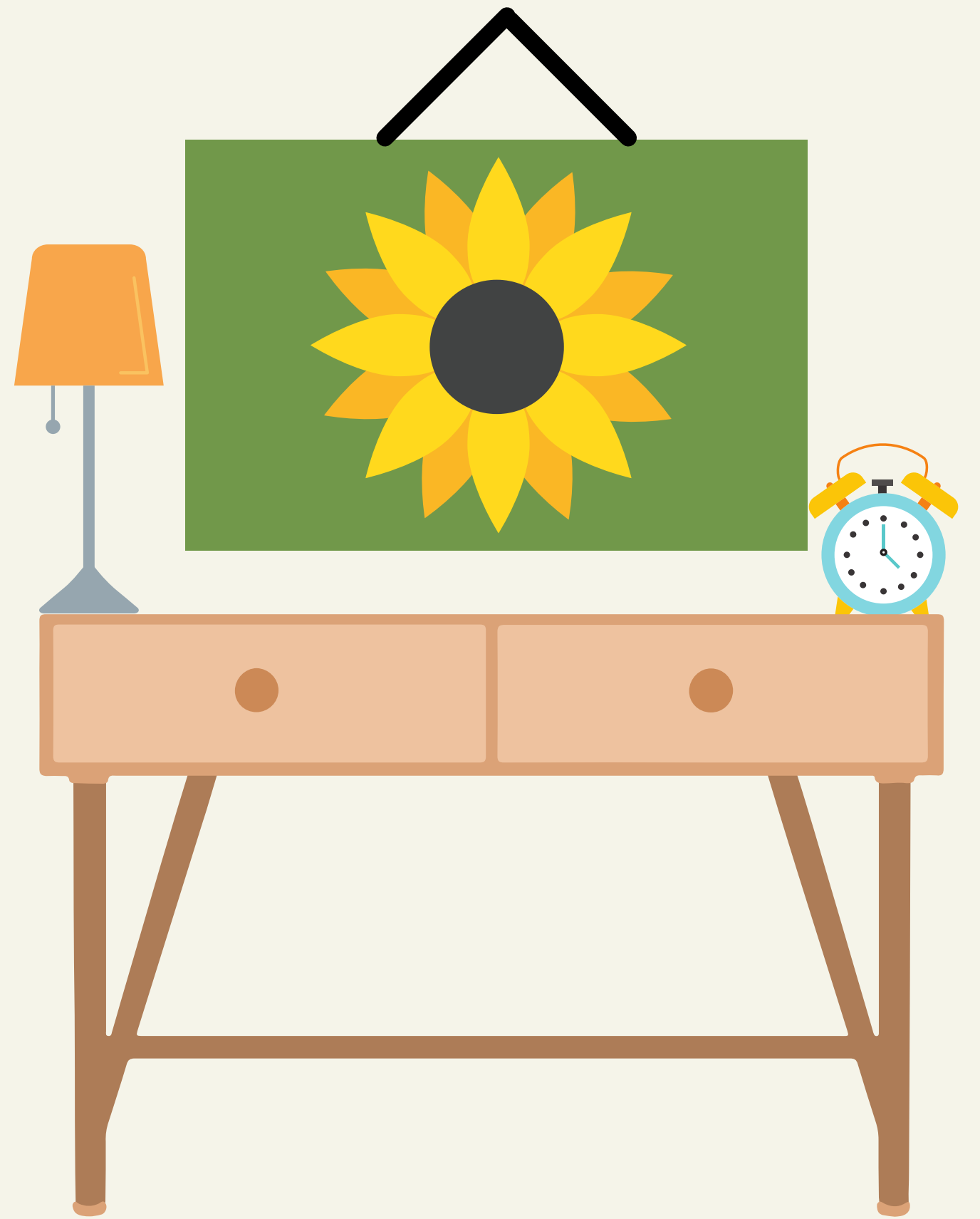
Use a decorative box with a lid to hold spare change/keys/phone.

Max of 3 items to include artwork/mirror.

Never leave mail on the table.



# HOME OFFICE STAGING

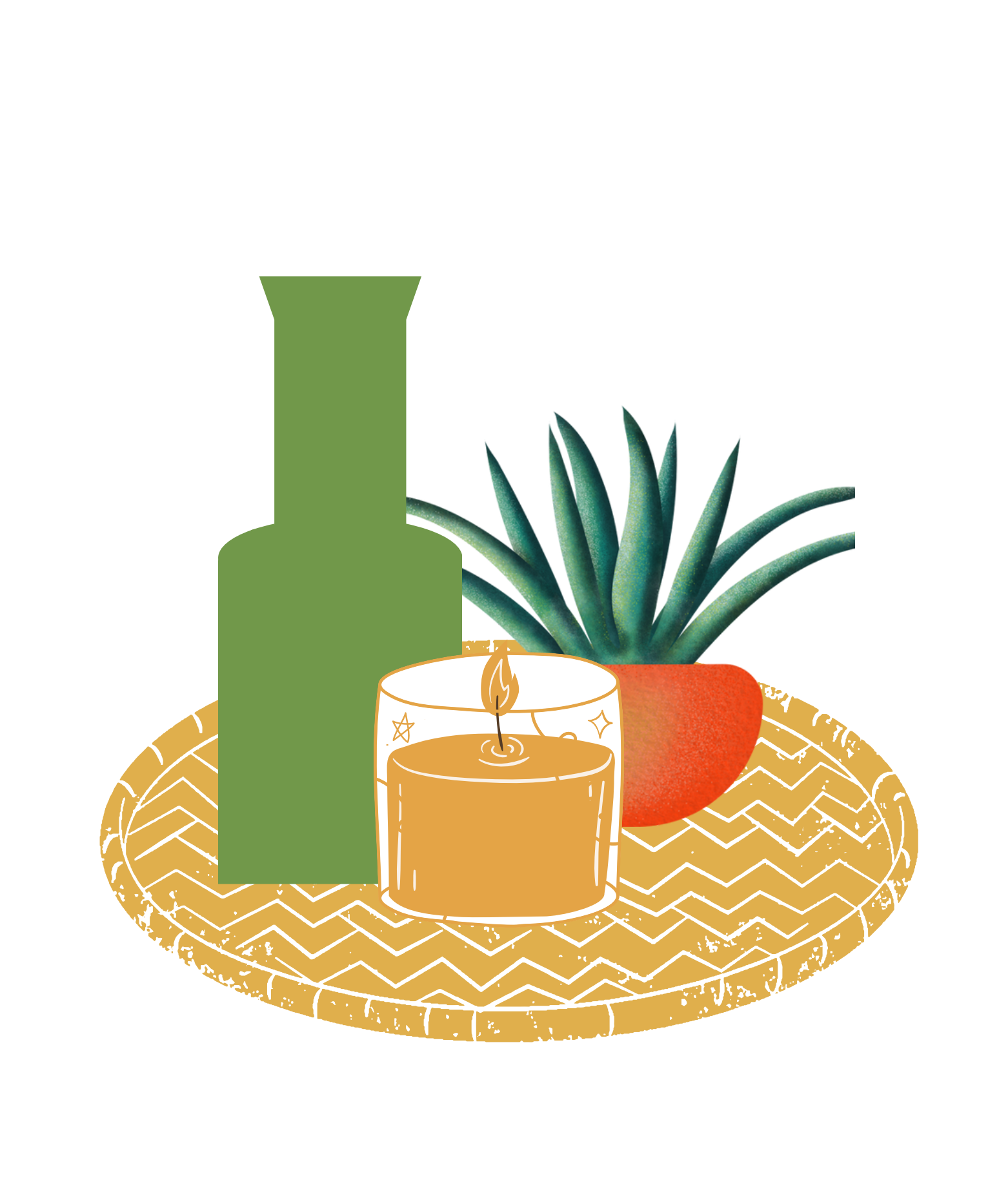
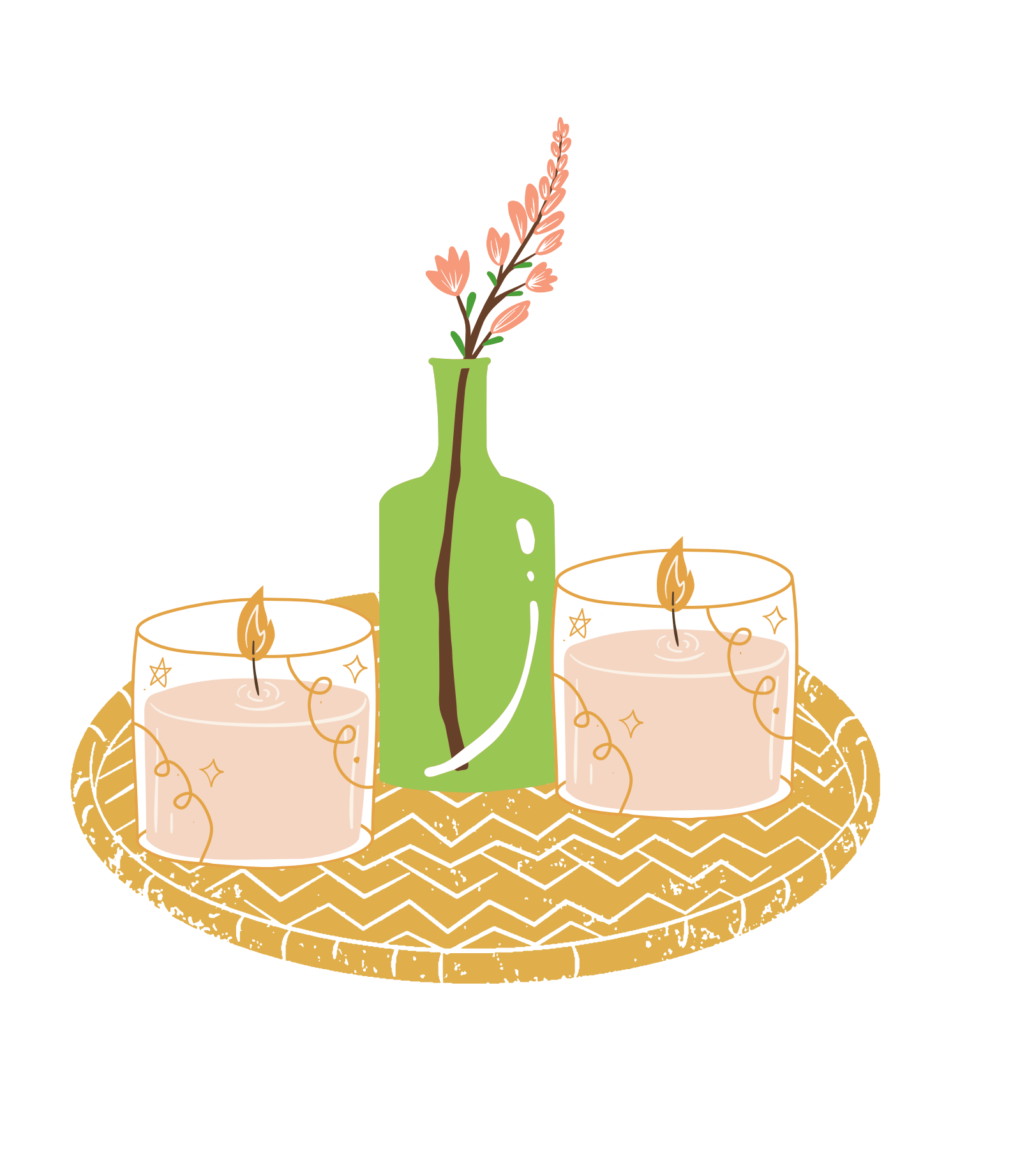


# HOME OFFICE STAGING TIPS

Keep the desk clutter free and use only 3 items on or around the desk. The item on the wall counts as the third item.

Laptops may want to be placed in the desk drawer for safe keeping.

# COFFEE TABLE STAGING



# COFFEE TABLE STAGING



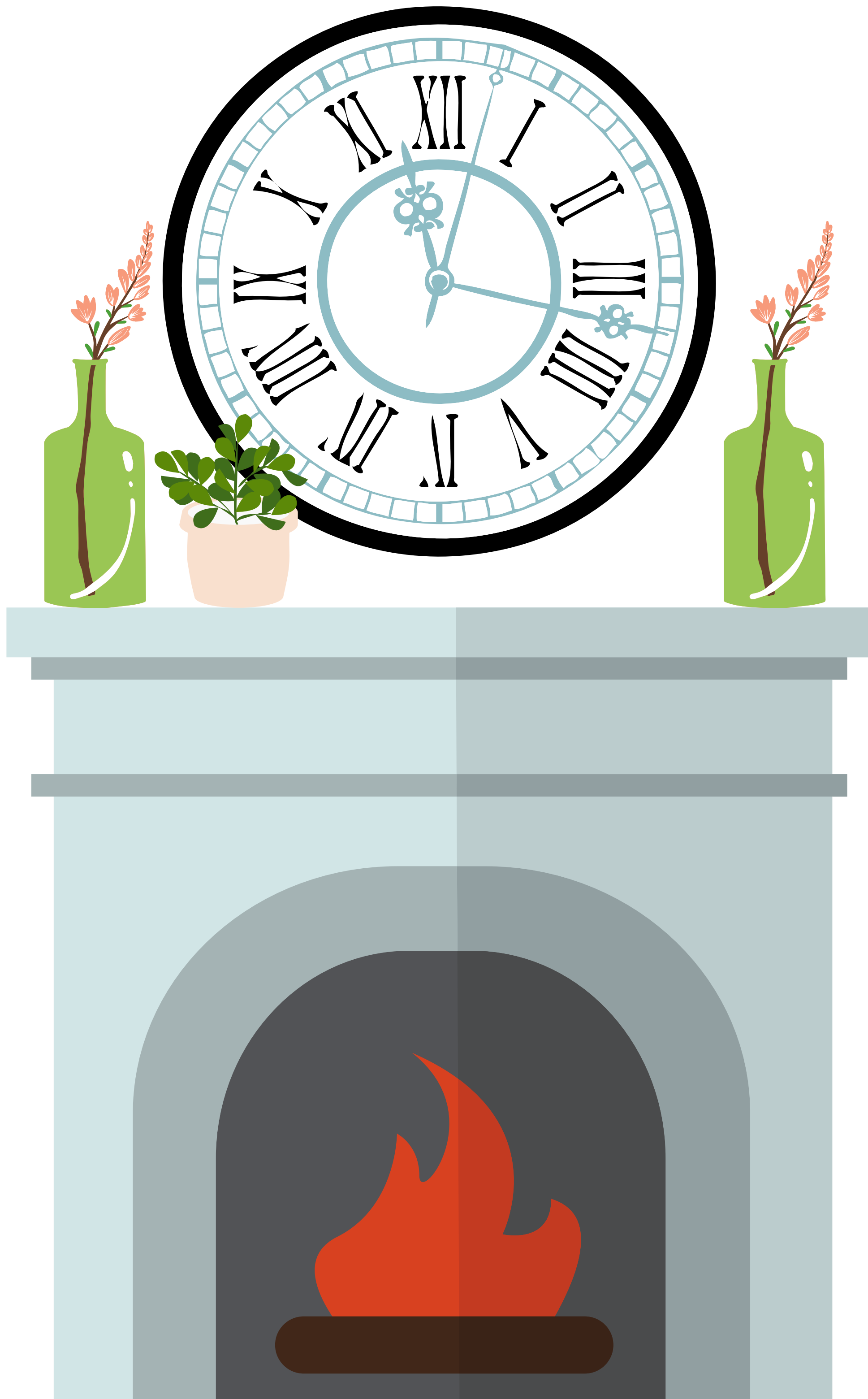
# COFFEE TABLE STAGING TIPS

Use a decorative tray to help corral items together onto the coffee table. Use 3-5 items on the tray.

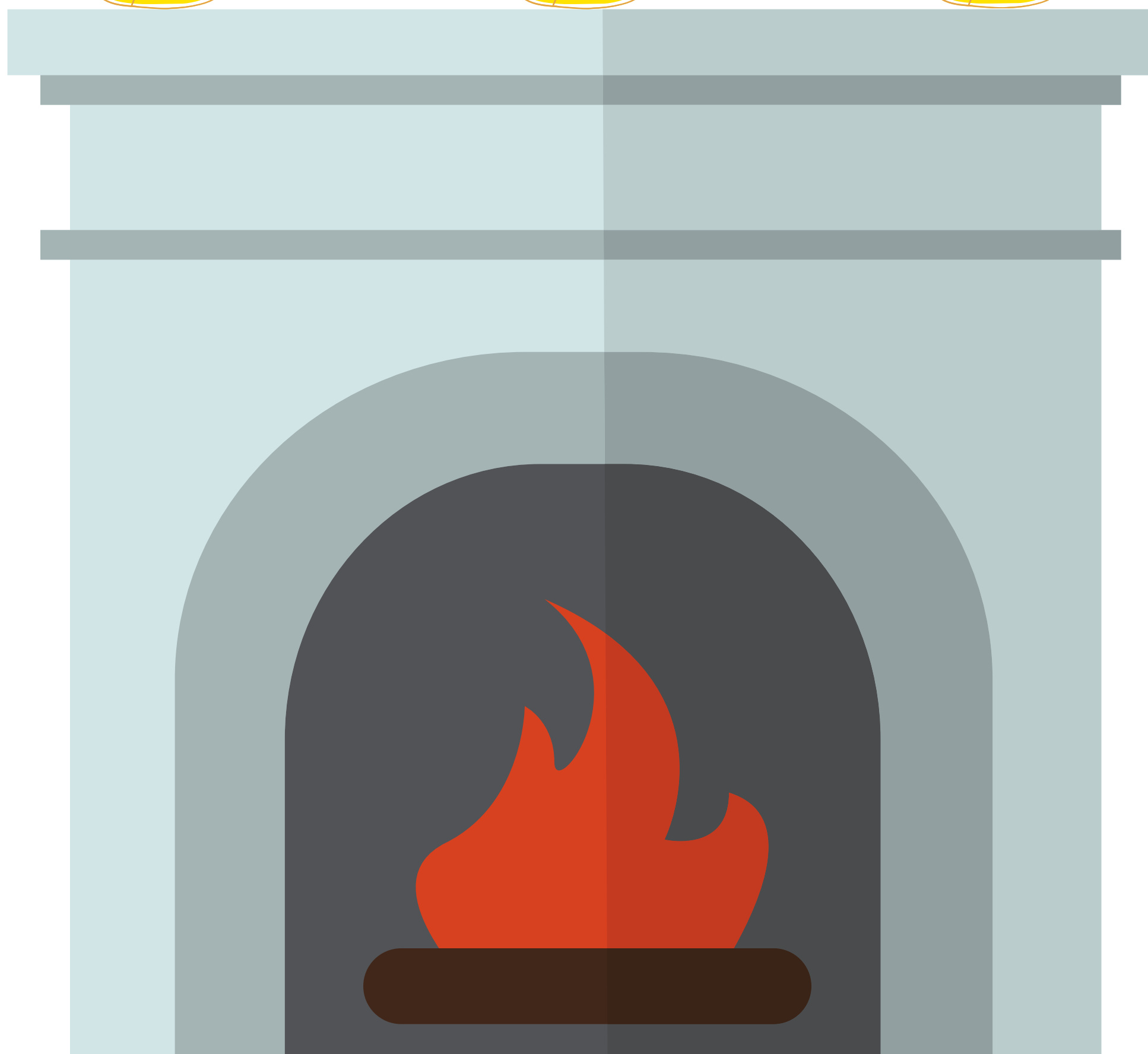
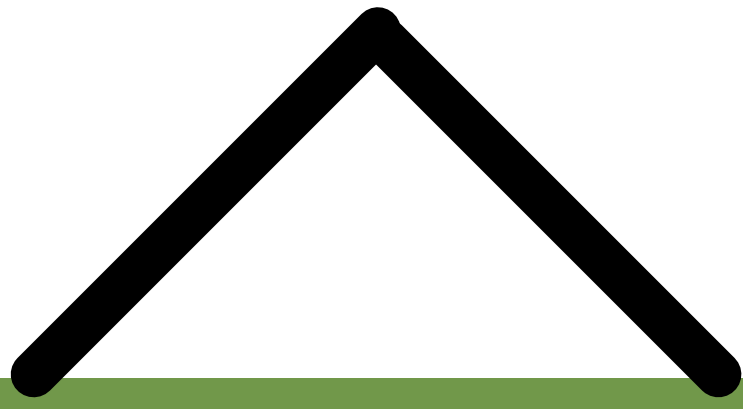
# MANTLE STAGING



# MANTLE STAGING



# MANTLE STAGING





# MANTLE STAGING TIPS

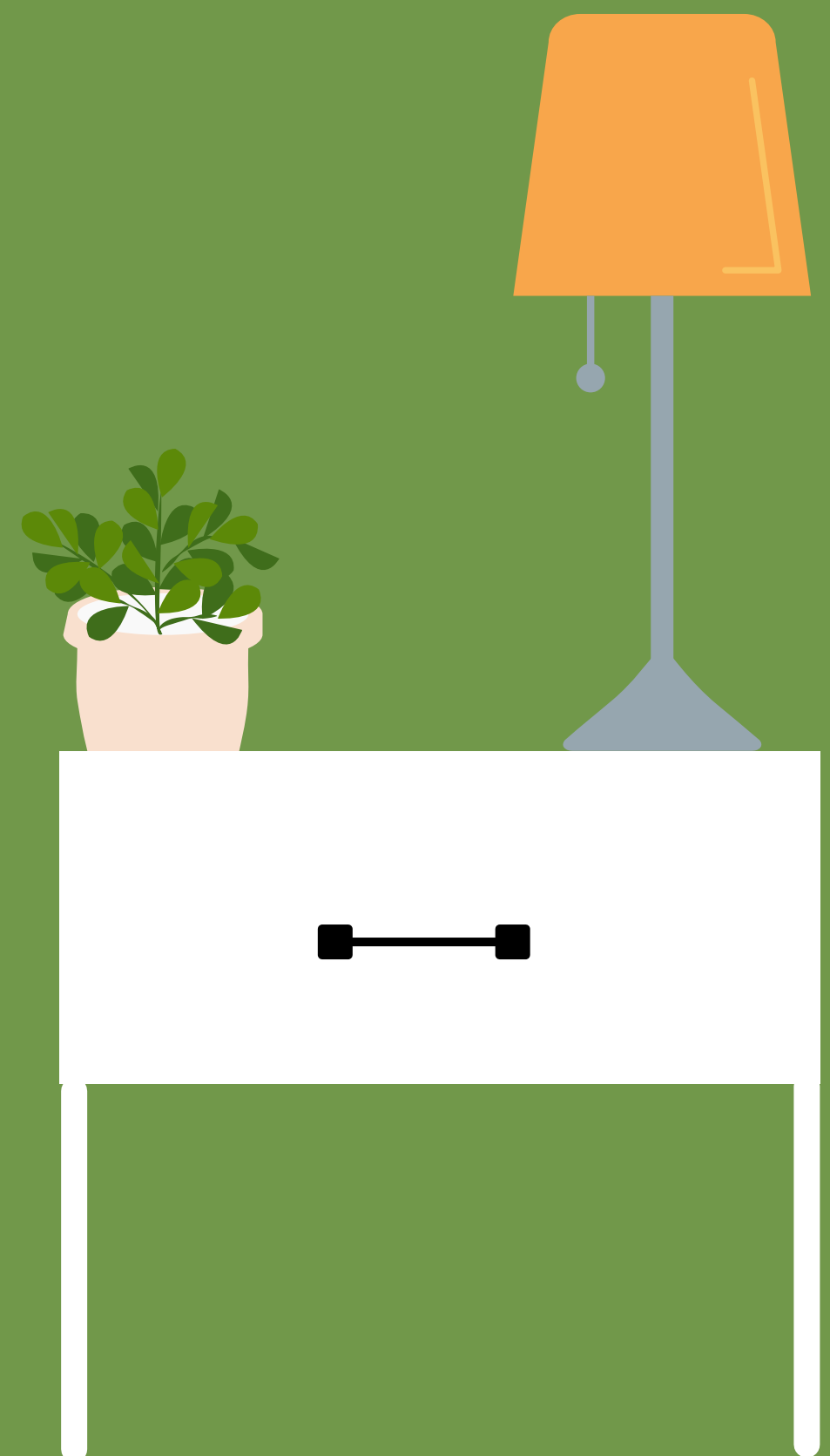
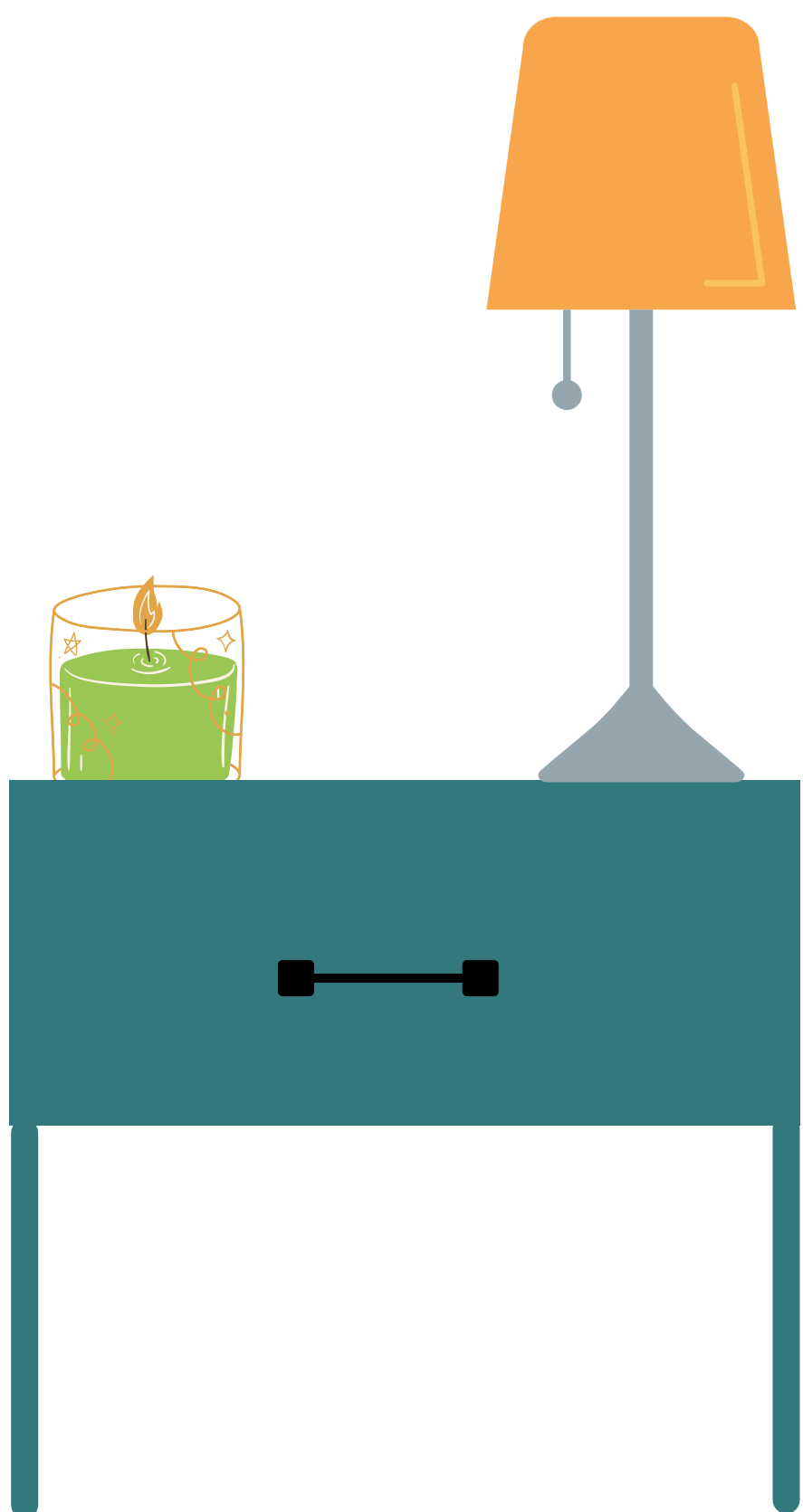
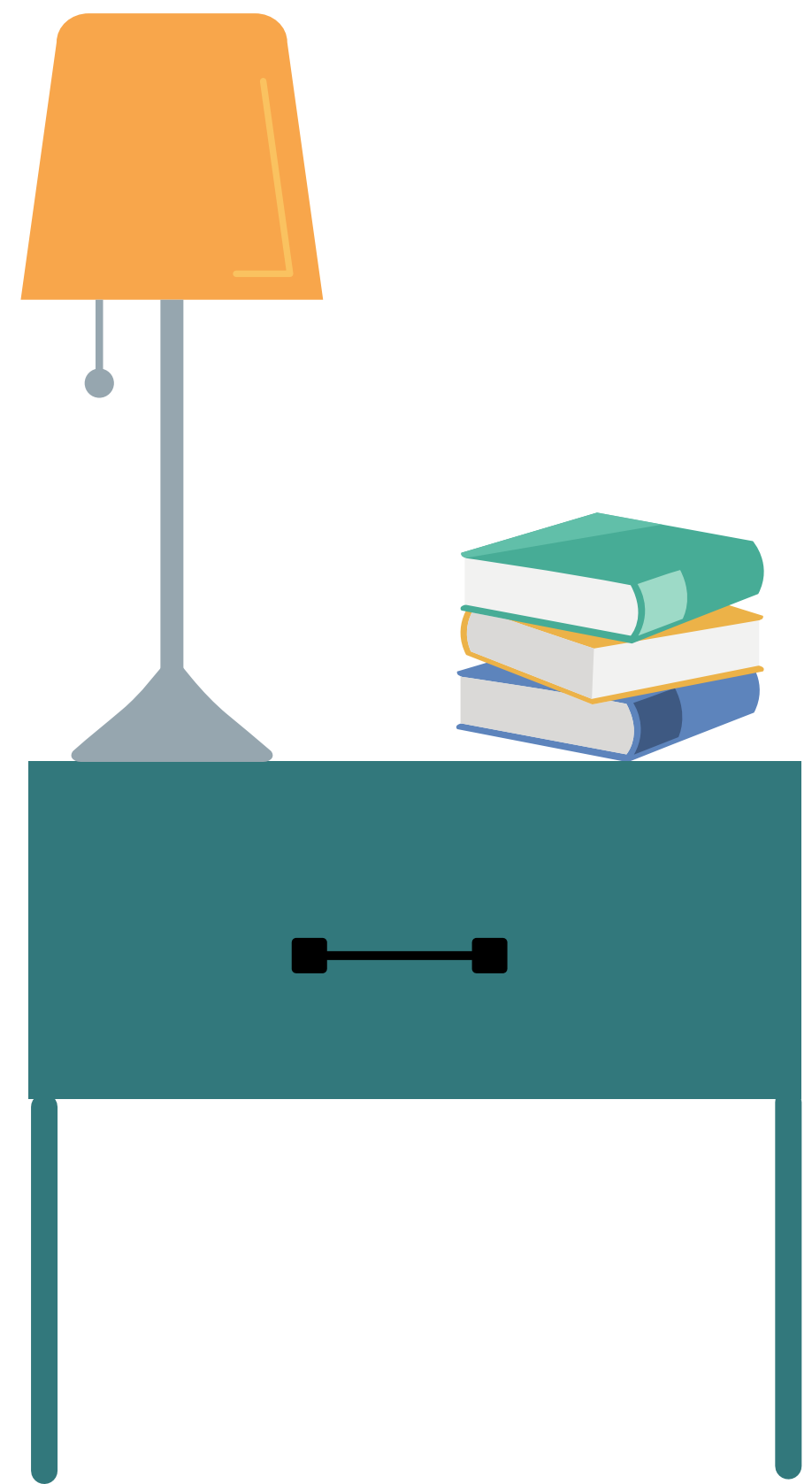
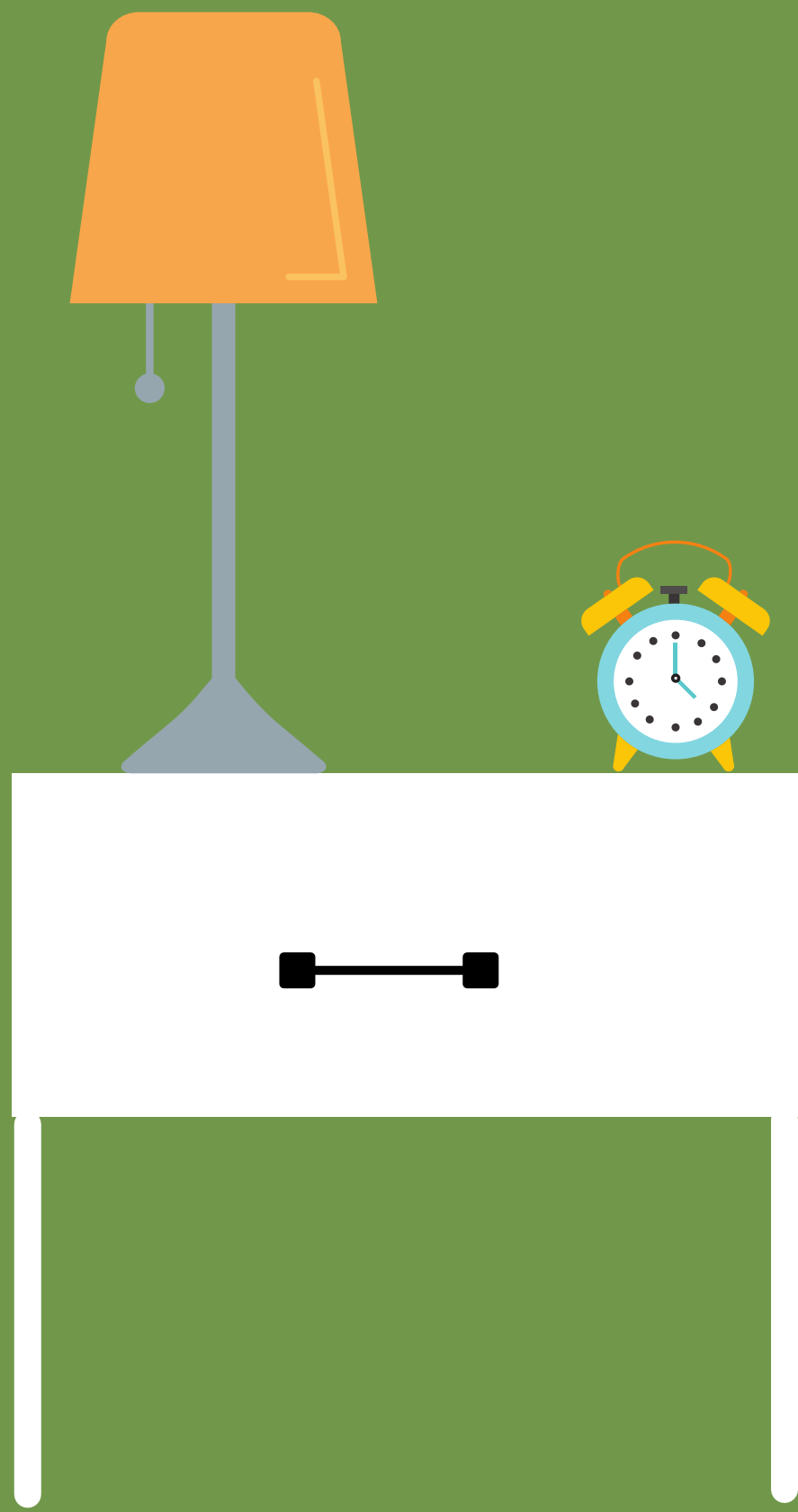
Use a mirror or painting over the fireplace (unless a TV is there).

Add small candles or candlesticks to give some height on the mantle.

Small plants and flower vases are an easy way to dress up the mantle too. Keep it to 3-5 items.

Remove any family photos.

# NIGHTSTAND STAGING



# NIGHTSTAND STAGING TIPS

Feel free to use a box of tissues on the nightstand if you don't have any decorative items.

A nightstand should really only have a lamp but you can 1-2 small items on it if there is room.

# DRESSER STAGING

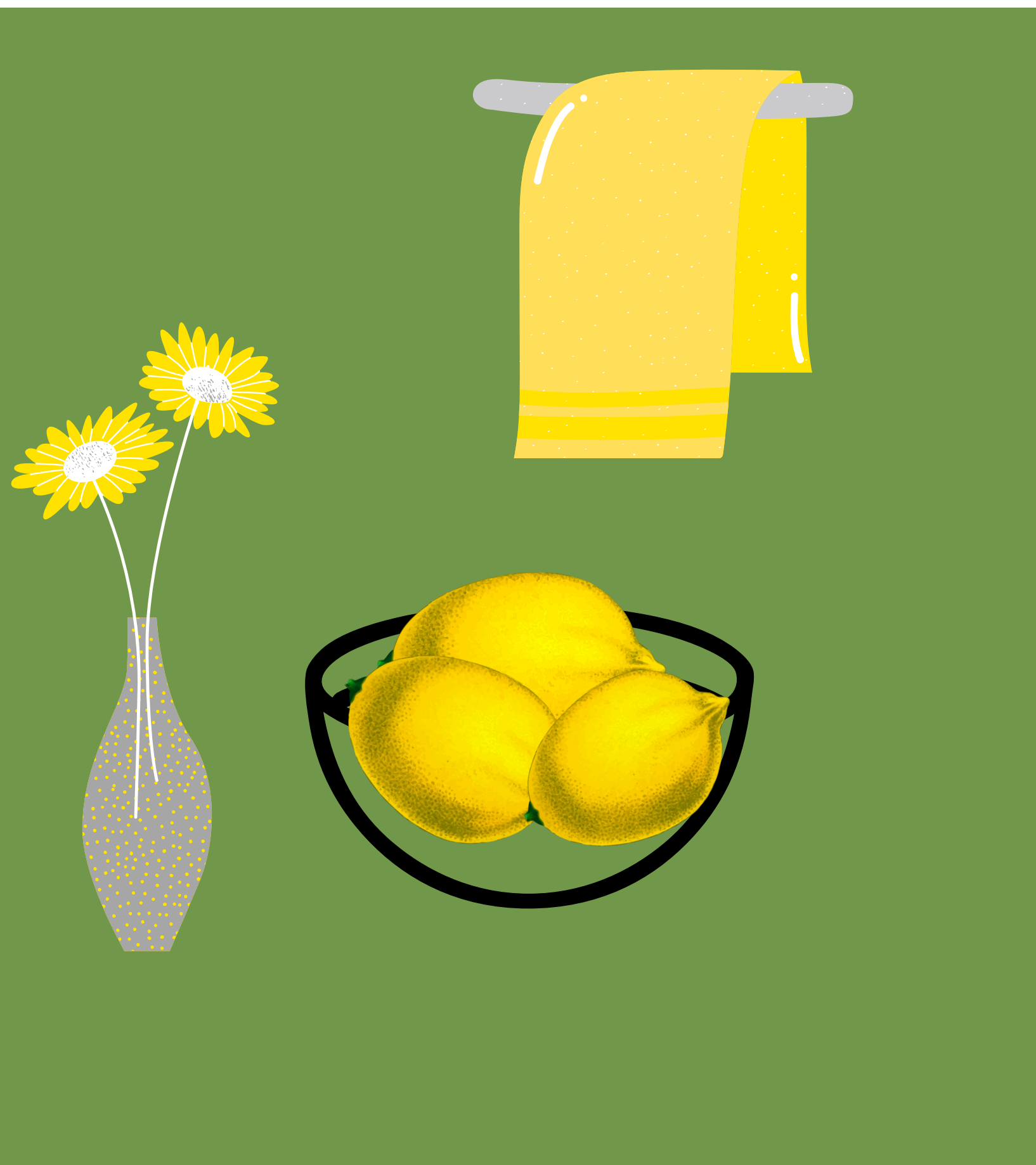


# DRESSER STAGING TIPS

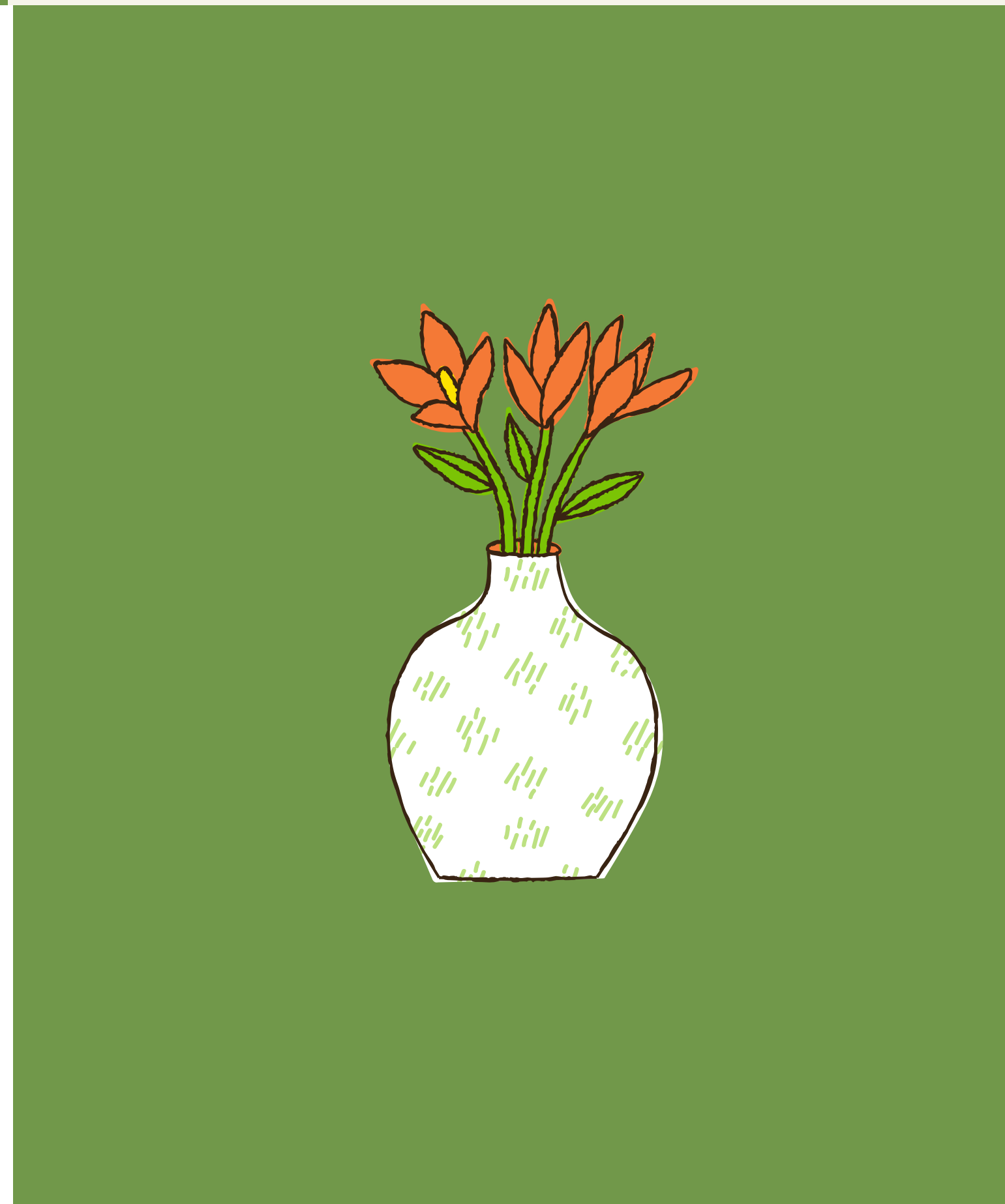
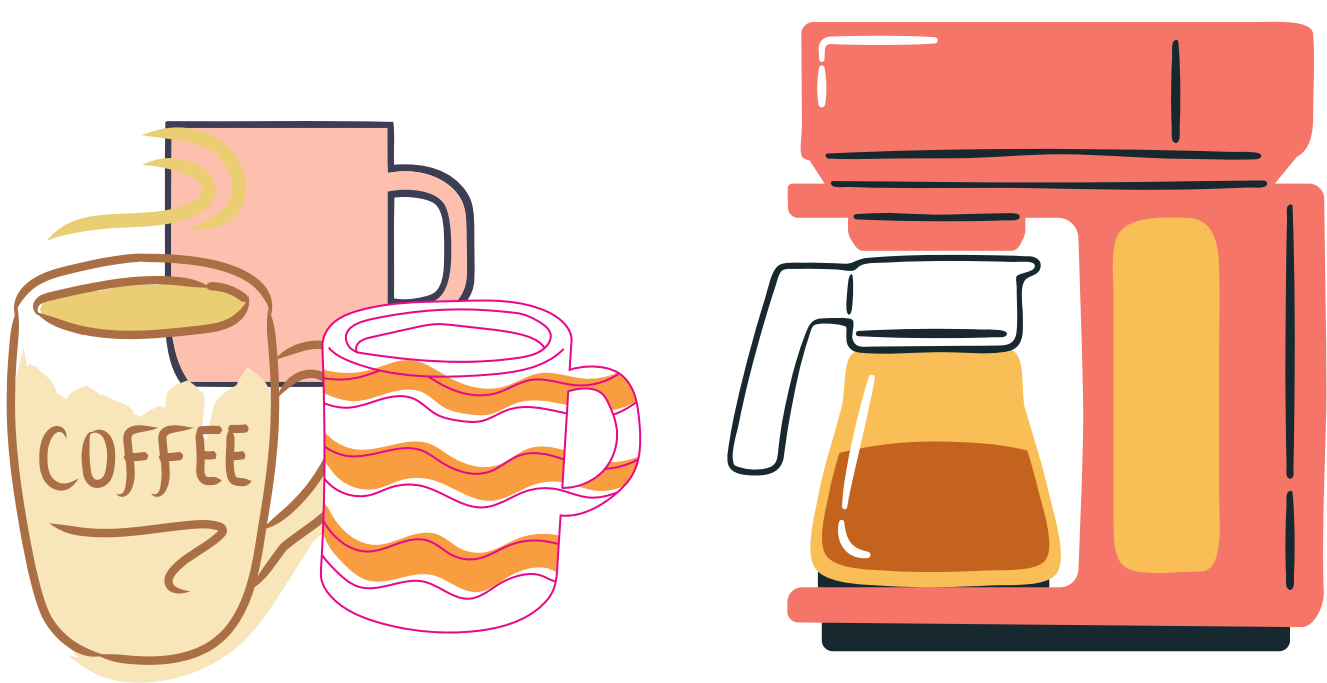
Feel free to use a box of tissues on the dresser if you don't have any decorative items.

A dresser should not have a jewelry box (for security) but use small items like a decorative box, small statue or candle.

# KITCHEN STAGING



## COFFEE BAR



# KITCHEN STAGING TIPS

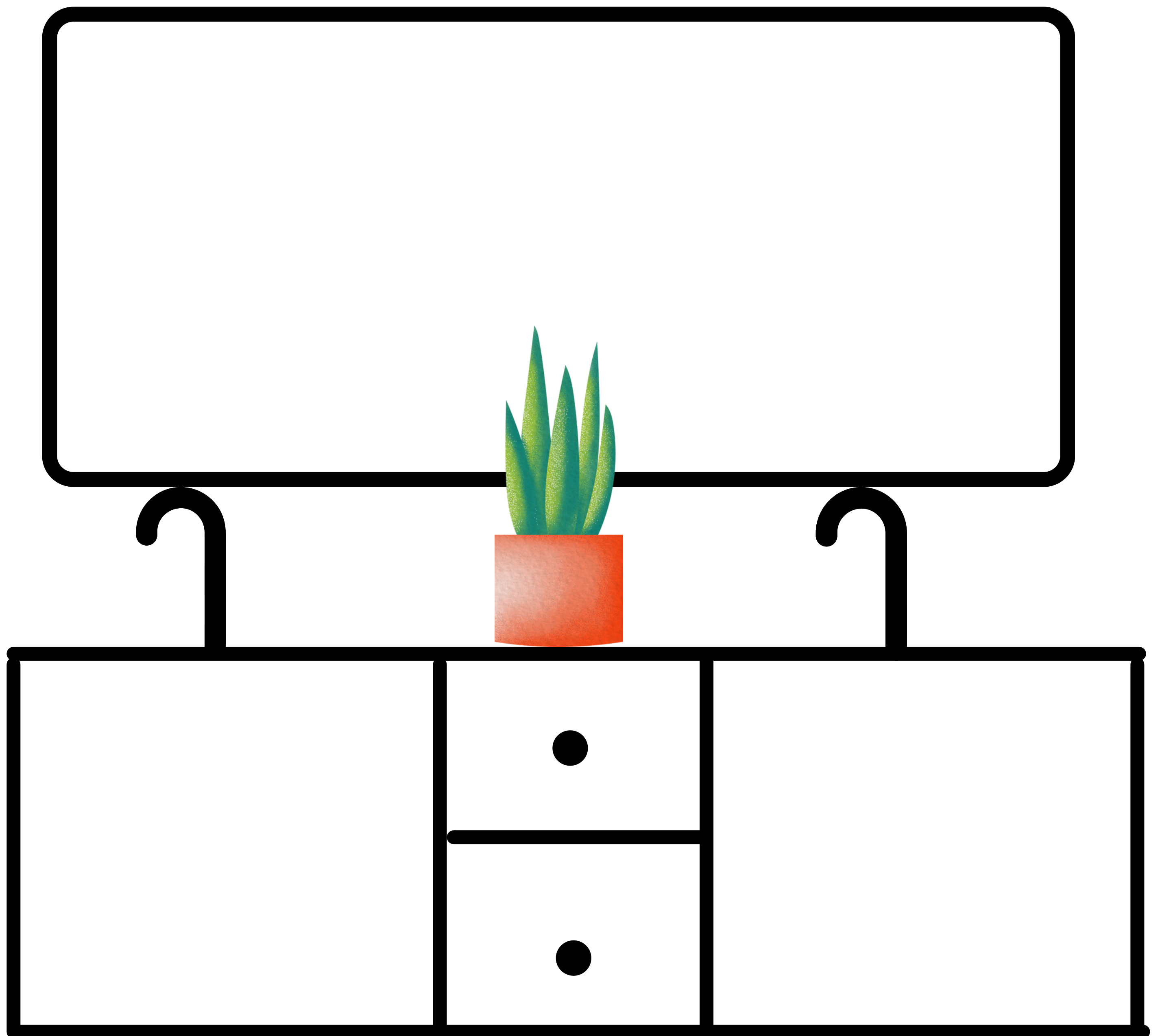
Use what the homeowner has to stage their kitchen.

A coffee bar would be cute if they have the coffee maker and mugs.

If they have decorative bowls use those to decorate the corners of the counter.

If there is a kitchen island you can use a bowl of lemons or fresh vase of flowers.

# BATHROOM STAGING



Clear everything off bathroom counters. Place a small fake potted plant or box of tissues on counter. Everything else is stored under the sink (to include toothbrushes etc)





Use newer white, gray, blue or green solid colored towels in the bathroom.

Or use solid colored towels that match the shower curtain.



2 bath towels per towel bar folded in thirds.

One hand towel per ring.

# LIVING ROOM STAGING TIPS

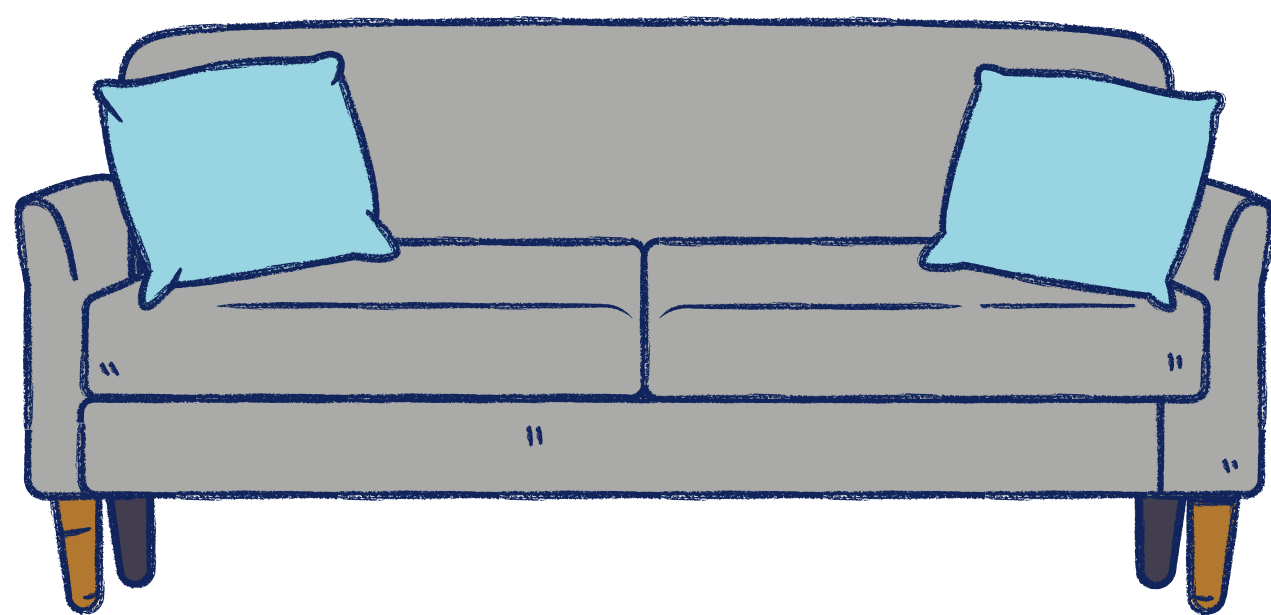
Add throw pillows, blankets and side table items to stage your living room.

Use 1-2 colors as mentioned before and repeat throughout the house.

For a couch/sofa, you can get away with just adding 2-3 pillows; one in each corner and then one lumbar pillow in the middle.

Add a throw blanket on one side of the couch and drape it over the edge.

You can add a pillow to an arm chair and a throw blanket too.



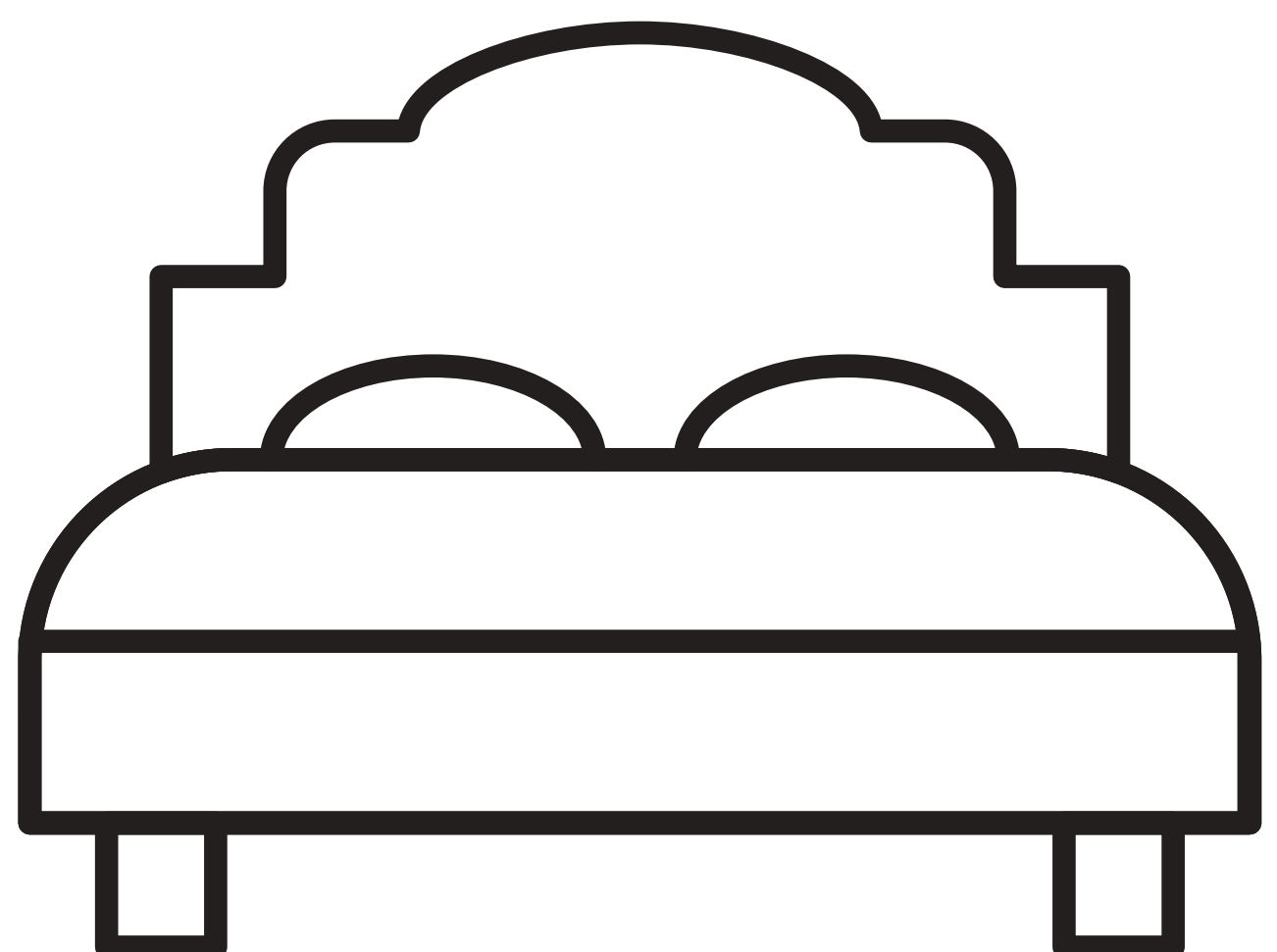
# BEDDING ARRANGEMENT

Use a bedskirt if metal frame is exposed.

Twin bed: 1 pillow, bedsheets and bed skirt.

Full/Queen bed: 2 standard pillows, 1-3 decorative pillows, bedsheets and bedskirt.

King bed: 2 king pillows, 2 standard pillows, 3 decorative pillows, bedsheets and bedskirt



# PLACES TO BUY ACCESSORIES

Hobby Lobby  
Michaels  
Kirklands  
Big Lots  
Burke's Outlet  
Ross  
TJ Maxx  
thrift stores

Or...

You can buy them  
here on this link so  
you don't have to  
search around town

[HTTPS://WWW.BLUEDIAMONDSTAGINGANDDSIGN.COM/STAGING-  
ACCESSORIES](https://www.bluediamondstaginganddesign.com/staging-accessories)

If you need more  
staging help, I offer  
one room staging  
advice or a whole  
house staging consult

Go to

[bluediamondstaginganddesign.  
com/services-2](http://bluediamondstaginganddesign.com/services-2)